



User Manual

Model: H612C

Govee Strip Light S

Safety Instructions

Read and follow all the safety instructions:

- Use the product with the provided power adapter only.
- Be cautious of static electricity during installation and usage. Keep the product away from sharp objects or strong corrosive chemicals.
- When bending the strip lights during installation, avoid folding the LED components as it may affect the product's life span.
- Remove nails, metal, or other conductive objects from the installation surface before attaching the strip light, as it may cause short-circuiting.
- Do not install the strip light near any heat sources.
- Do not allow children to install the strip light alone.
- Avoid installing the strip light near potentially dangerous sources (e.g., candles, liquid-filled objects).
- Unroll the strip lights before powering them on.
- **CAUTION**-The product is not a toy. Children and the disabled should use it under adult supervision.

Introduction

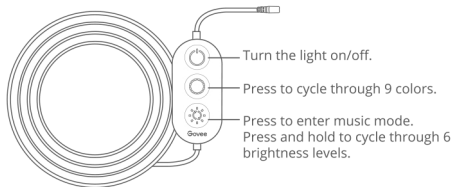
Thanks for choosing the Govee Strip Light S. This product is equipped with a 10m RGBICW strip light and supports app, voice (Alexa/Google Assistant).

RGBICW is Govee's latest lighting display technology. With its advanced IC chips (independent control), each strip light segment can be adjusted independently, creating vibrant rainbow effects.

What You Get

| | |
|------------------|---|
| LED Strip Lights | 1 |
| Adapter | 1 |
| User Manual | 1 |
| Service Card | 1 |

At a Glance



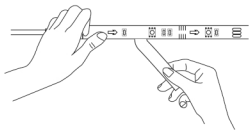
Installing Your Device

Before You Install

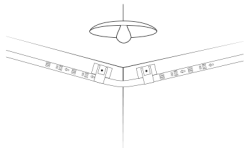
- 1 Unpack the box and check all items listed in the packing list.
- 2 Power on the strip light and check whether it lights up.

Installing Steps

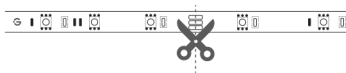
- 1 Wipe the surface to make sure it's clean and dry.
- 2 Peel off the protective film on the tape, stick the strip on and press over it firmly.



- 3 Peel off the protective film on the control box and stick it on. Place the control box close to the music source to achieve the best music effect.
- 4 Power on the strip lights and start using.



The strip light supports a minimum cut length of 3 meters.



Attention:

For your safety, please unplug the power plug before cutting. Cut the strip light from the end along the cut mark according to demand.

Pairing Your Device with the Govee Home App

What You Need

A Wi-Fi router supporting the 2.4GHz and 802.11 b/g/n bands. 5GHz is not supported.

Pairing Instructions

- 1 Download the Govee Home app from the App Store (iOS devices) or Google Play (Android devices).
- 2 Turn on Bluetooth on your smartphone.
- 3 Open the app, tap the "+" icon in the top right corner and search for "H612C".
- 4 Tap the device icon and follow the on-screen instructions to complete pairing.

Controlling the Device with Your Voice

- 1 Open the app, then tap the device icon to enter detail page.
- 2 Tap the setting icon in the top right corner.
- 3 Select Using Guidance and follow on-screen instructions to control the device using your voice.

Specifications

| | |
|----------------------------------|---------------------------------|
| Length | 10m/32.8ft |
| Light Color | RGBICW |
| Control Method | App, Control Box, Voice Control |
| Adapter Input | AC 200-240V |
| Power Input (LED Strip Light) | 24VDC 1.5A |

Troubleshooting

- 1 The adhesive tape is not strong enough.
 - Make sure the installation surface is clean and dry.
 - Firmly press over the strip after sticking.
 - Reinforce the installation via more clips and tape.



2 Cannot connect to Bluetooth.

- Do not skip Bluetooth connection in the app.
- Ensure Bluetooth on your smartphone has been turned on.
- Your smartphone may be incompatible with the Govee Home app. Try using a different smartphone then reconnect.
- Power the strip lights and your smartphone Bluetooth off then on, then try again.
- Ensure that your smartphone is within 1m/3.28ft of the strip lights when connecting.
- Clear any obstructions that are between the strip lights and your smartphone.

3 The strip lights does not display the full selected color/Some LED beads do not light up.

- Please contact the Govee support team for rapid product replacement.

4 Cannot sync the strip lights to the beat of my music.

- Move the control box closer to the music source.
- Clean the mic on the control box then try again.

5 Cannot connect to Wi-Fi.

- Do not skip the Wi-Fi connecting steps in the app.
- 5GHz network is not supported. Please set the router to 2.4GHz and then reset it.
- Connect your phone to Wi-Fi and check whether the network works well.
- Make sure you have entered the correct Wi-Fi name and password.
- Change your Wi-Fi password to a brief one. 8 numbers and letters are suggested.
- Connect hotspot in your phone to the strip lights and check whether the router works with the strip lights.

6 Cannot connect to Alexa.

- Pull out every connective part of the strip lights and firmly re-connect them.
- Re-connect your phone to Wi-Fi.
- Plug out the adapter port and re-plug it in.

Customer Service

 Warranty: 12-Month Limited Warranty

 Support: Lifetime Technical Support

 Email: support@govee.com

 Official Website: www.govee.com

 @Govee  @govee_official  @govee.official

 @Goveeofficial  @Govee.smarthome